



2011

NAVIGATING THE SEAS OF TOMORROW

## ...still navigating the seas of tomorrow!!

Now more than ever, Seiwa's commitment to innovation and quality comes true with the new range introduced to celebrate our 25th anniversary.

25 years of excellence to design and build a range of stylish, smart, user friendly, powerful and innovative chart plotters and combo chartplotters/fishfinders, backed up by a complete range of integrated accessories to fit your boat with the most reliable and high performance products.

The large number of instrument inputs and outputs allow a wide range of combinations, thus making it possible to create an attractive, helm and navigation station thanks with built-in capability.

Because this is our mission: to create the electronics you need to sail safely and comfortably, no matter what your boat and destination is, no matter if you are at sea for pleasure or business.

And so, our chartplotters, fishfinders, radars, TV satellite antennas, autopilots, NMEA repeaters are all designed to offer you the best networking solutions coupled with superior warranty and technical support and service commitment all over the world. This catalogue gives you all the answers you need to help you make the best choice for your boat.

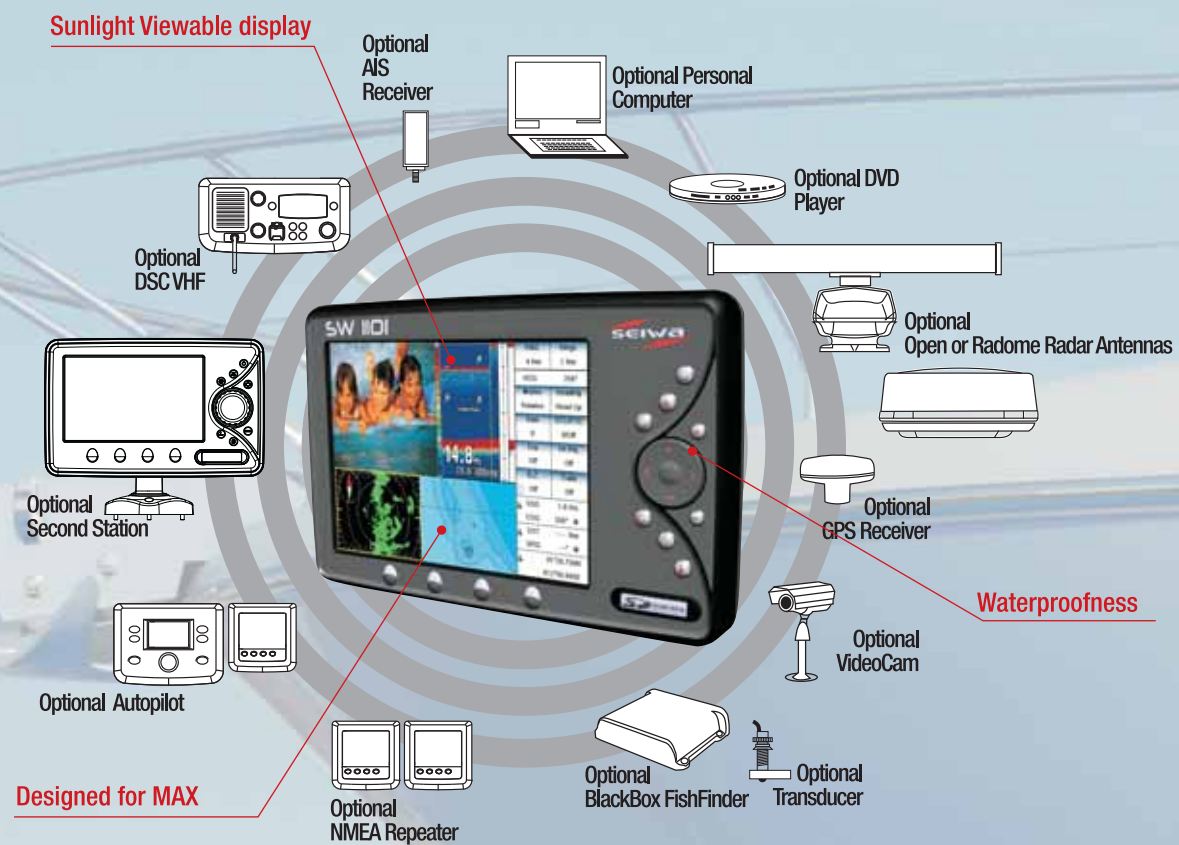
**Welcome to the next 25 years of Seiwa's navigation on the seas of tomorrow!!**







Maximum versatility and performance  
from your Seiwa plotters and accessories



You put the boat, we put the right electronic equipment!



Suggested System

Whatever your need is, we have what it takes for all types of sailing yachts, as well as all types of power boats. Whether is a single station solution or tailor-made networked systems; whether you are cruising or weekend sailing, or if you race, there will always be the right combination of products to satisfy your needs. Seiwa offers a wide range of radars, black box fish finder, GPS antenna and multi-station displays. They can also be connected to autopilots and NMEA instruments, for the most complete package. The following are suggestions of marine electronic systems layouts for sailboats and powerboats of various sizes. As every boat and every boat owner is one of a kind, please refer to your local Seiwa dealer for the best advice on the most suitable solution for your needs.

### Powerboats Under 28'



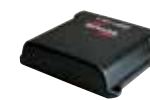
Autopilot  
SW AP01



NMEA  
SW RP-03, RP-05, RP-07



Chartplotter/Fishfinder  
SW 501i



Black Box Fish Finder  
50/200

### Powerboats From 28' to 40'



Autopilot  
SW AP01



NMEA  
SW RP-03, RP-05, RP-07



Chartplotter/Fishfinder  
SW 501ci



Chartplotter/Radar/Fishfinder  
SW 701e



Black Box Fish Finder  
50/200



Radar  
Radome SWR 9

### Powerboats Over 40'



Autopilot  
SW AP03



NMEA  
SW RP-03, RP-05, RP-07



Chartplotter/Radar/Fishfinder  
MARLIN



Chartplotter/Radar/Fishfinder  
SW 1101



Black Box Fish Finder  
50/200



Radar  
Open SWR 10

seiwa-marine.com

You put the boat, we put the right electronic equipment!

## Sailboats Under 30'



Autopilot  
SW AP01



NMEA  
SW RP-03, RP-05, RP-07



Chartplotter/Fishfinder  
SW 501e



Radar  
Radome SWR 1

## Sailboats From 30' to 50'



Autopilot  
SW AP01



NMEA  
SW RP-03, RP-05, RP-07



Chartplotter/Radar/Fishfinder  
SW 701ce



Chartplotter/Fishfinder  
SW 501e



Radar  
Radome SWR 8

## Sailboats Over 50'



Autopilot  
SW AP03



NMEA  
SW RP-03, RP-05, RP-07



Chartplotter/Radar/Fishfinder  
EXPLORER<sup>3</sup>



Chartplotter/Radar/Fishfinder  
SW 1101



Radar  
Radome SWR 9

## Fishingboats Under 30'



Autopilot  
SW RA01



Chartplotter/Radar/Fishfinder  
EXPLORER<sup>3</sup>



Black Box Fish Finder  
50/200



Radar  
Radome SWR 9

## Fishingboats Over 30'



Autopilot  
SW AP03



Chartplotter/Radar/Fishfinder  
MARLIN



Chartplotter/Radar/Fishfinder  
EXPLORER<sup>3</sup>



Black Box Fish Finder  
50/200

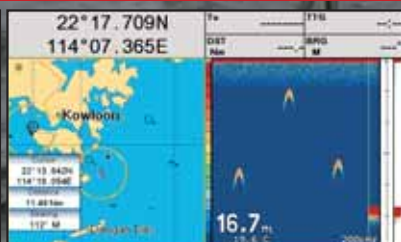


Radar  
Open SWR 10





Perspective view - Normal Palette



Chartplotter & Echosounder (FishFinder)



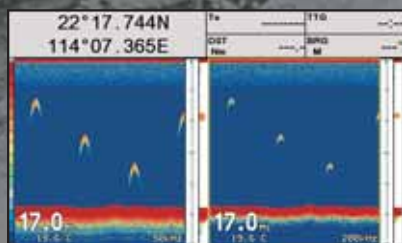
Nav Data



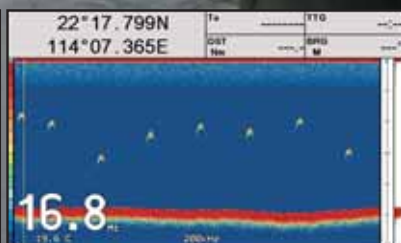
Gauges



Cartography - Night palette



FishFinder Zoom



Echosounder (FishFinder) full screen



Wind data



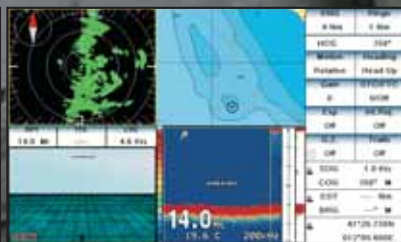
3D highway



Easy menu



Chartplotter & Radar



Multi-function display



First Set up Page



Multi-function display - Video camera



Chart

## Chartplotter

- SW 1101
- SW 701i · SW 701e
- SW 501i · SW 501e
- Marlin
- Explorer3
- Seawave SD



## SW 1101

**Plotter**  
**+ FishFinder (optional)**  
**+ Radar (optional)**  
**Bracket and Flush mountable**  
**Video input**  
**Video output**



SunLight Viewable



Waterproof



Warranty Years



Designed by Jeppesen Marine

Split the screen in 2 or 4  
 window combination

Intuitive interface puts you  
 in command

10.4" SVGA 800x600  
 Sunlight Viewable display

Brand New, the SW1101 four function chart plotter (cartographical plotter, fishfinder, radar, navigation data) with new SVGA resolution (800x600 pixel), sunlight viewable LCD completes the range of flush mounted instruments which can be built-in on your dash board.

The SW 1101 multifunction chart plotter the ideal solution for boats fitted with latest generation panel instrumentation.

The SW 1101 features 2 video inputs, to control on-board areas and guarantee safety during navigation, as well as 1 video output for repeating all the information available wherever needed.

Completely waterproof, the SW 1101 features a powerful and user friendly state-of-the-art software, now updated with outstanding graphics and cutting edge functions such as "Grounding Alarm", "Route Checking", "Smooth Zoom", "Analog Gauge", "Wind Data" and many others.

Jeppesen MAX charts offer unmatched quality, readability, and preciseness of data.







Chartplotter 4 functions

Chartplotter - FishFinder

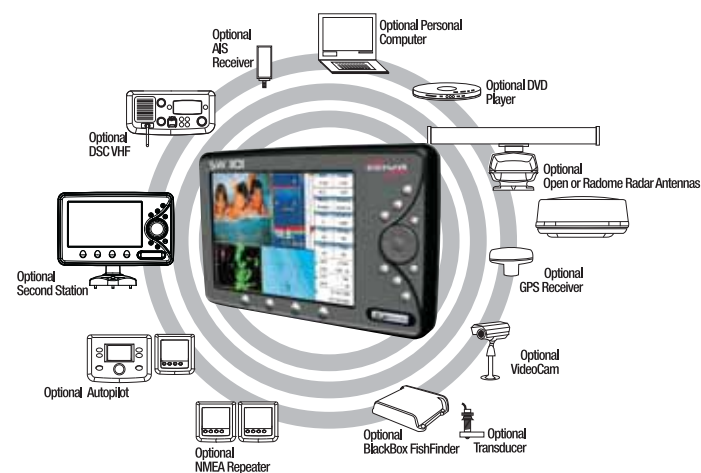
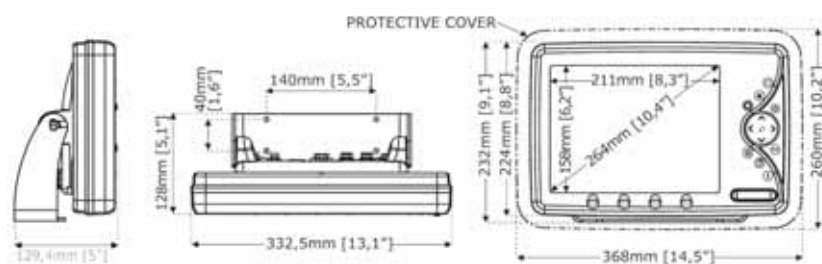
Chartplotter - Radar

Chartplotter - Night palette

Chartplotter

Chartplotter - Satellite Imagery

SW 1101



POWERBOATS FROM 28' TO 40'



SAILBOATS OVER 50'

seiwa-marine.com

## SW 701i · SW 701e

**Plotter**  
**+ FishFinder (optional)**  
**+ Radar (optional)**  
**Bracket and Flush mountable**  
**Video input**



SunLight Viewable



Waterproof



2  
Warranty Years



Designed by Jeppesen Marine

The most compact and powerful multifunction sunlight viewable ( WVGA display) chartplotter, featuring a unique sleek design and unsurpassed quality.

Completely waterproof, the SW 701 series can be flush mounted or bracket mounted, and come in two versions: built in GPS antenna, and External GPS antenna.

The new revolutionary quick disconnect adjustable bracket can be both tilted and rotated, matching all possible positioning and installation needs, and offering the easiest removal solution.

These new outstanding chartplotters can be also transformed into a fishfinder and a radar when coupled with the BBFF or one of the SWR series radar scanners.

Jeppesen MAX charts offer unmatched quality, readability, and preciseness of data.

User friendly state-of-the-art software has been now updated with outstanding graphics and cutting edge functions such as "Grounding Alarm", " Route Checking", "Smooth Zoom", and many others.

Split the screen in 2 or 4  
window combination

Intuitive interface puts you  
in command

7" WVGA  
Sunlight Viewable display





Chartplotter FishFinder

Chartplotter Radar

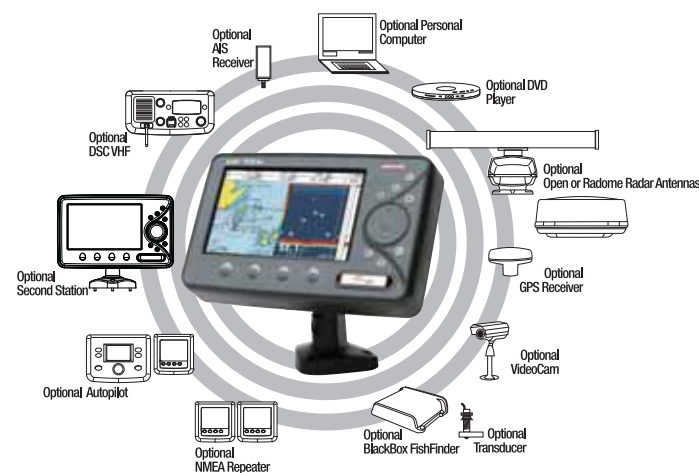
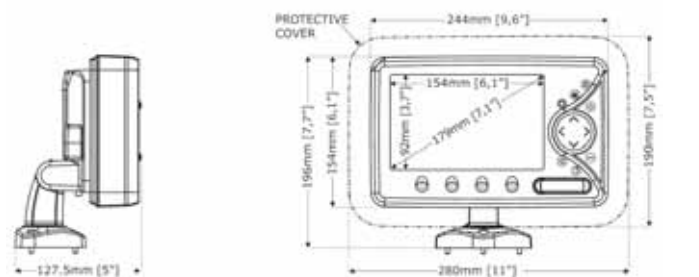
FisFinder

Chartplotter - Satellite Imagery

Chartplotter Cartography - Night palette

Chartplotter

SW 70li  
SW 70le



POWERBOATS FROM 28' TO 40'



SAILBOATS FROM 30' TO 50'

seiwa-marine.com



A compact, innovative, well-lit, sunlight viewable chartplotter, featuring a unique sleek design and unsurpassed quality. Completely waterproof, the SW 501 series can be flush mounted or bracket mounted, and come in two versions: built in GPS antenna, and External GPS antenna. The new revolutionary quick disconnect adjustable bracket can be both tilted and rotated, matching all possible positioning and installation needs, and offering the easiest removal solution. These new outstanding chartplotters can be also transformed into a fishfinder when coupled with the BBFF. Jeppesen MAX charts offer unmatched quality, readability, and preciseness of data. User friendly state-of-the-art software has been now updated with outstanding graphics and cutting edge functions such as "Grounding Alarm", "Route Checking", "Smooth Zoom", and many others.

## SW 501i · SW 501e

**Plotter  
+ FishFinder (optional)  
Bracket and Flush mountable**



SunLight Viewable



Waterproof



Warranty Years



Designed by Jeppesen Marine

Intuitive interface puts you  
in command

Multifunction

5" QVGA  
Sunlight Viewable display





Chartplotter SW 500e

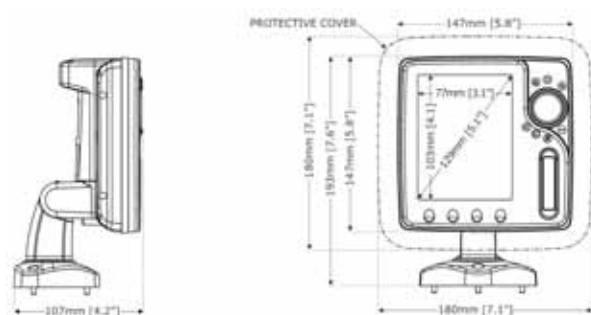
Chartplotter SW 500i

FishFinder

Chartplotter Fishfinder

Chartplotter - Satellite Imagery

SW 500i  
SW 500e



POWERBOATS UNDER 28'



SAILBOATS UNDER 30'

# Marlin

**Plotter**  
**+ FishFinder (optional)**  
**+ Radar (optional)**  
**Bracket and Flush mountable**  
**Video input**  
**Video output**



SunLight Viewable



Waterproof



Warranty Years



Designed by Jeppesen Marine

15" XGA 1024x768  
 Sunlight Viewable display

Split the screen in 2 or 4  
 window combination

Multifunction

User Friendly

The Marlin Seiwa is a multifunction display that can easily be turned into a combination of GPS Chartplotter, Fishfinder, Radar (optional Radar and Fishfinder sensor are available)

The Marlin features 2 video inputs, to control on-board areas and guarantee safety during navigation, as well as 1 video output for repeating all the information available wherever needed.







Chartplotter - Satellite Imagery



Chartplotter - FishFinder



FishFinder

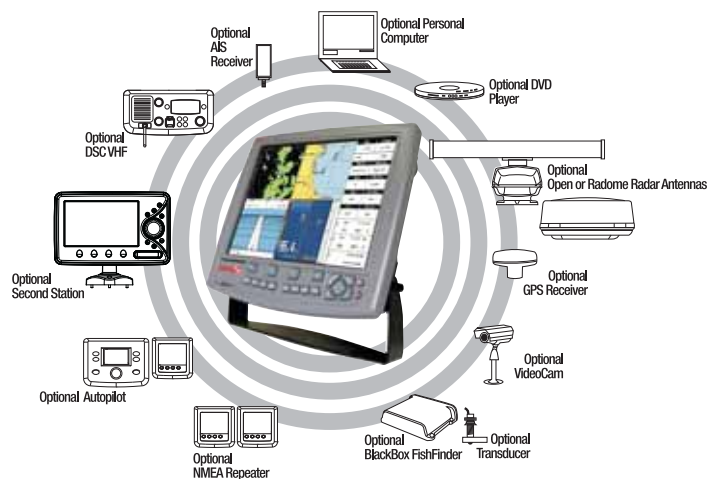
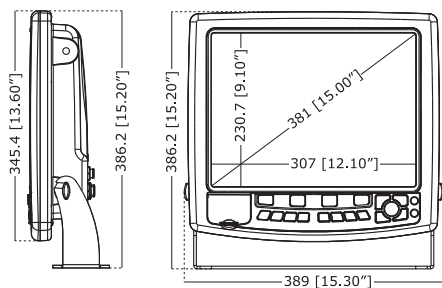


Chartplotter FishFinder Radar Video



Chartplotter - Radar

Marlin



POWERBOATS OVER 40'



SAILBOATS OVER 50'

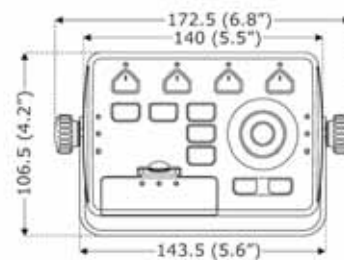
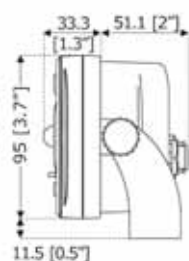
seiwa-marine.com

The EXPLORER CUBE is yet another improvement of the most reliable and affordable controller in the world. It now features a 400Mhz microprocessor, and selectable resolution up to 1024x768

## Explorer 3



**Plotter**  
**+ FishFinder (optional)**  
**+ Radar (optional)**  
**Bracket and Flush mountable**  
**Video output**



Designed by Jeppesen Marine





The new Seawave is ruggedly built to work smoothly in extreme conditions; the exclusive secure digital system allows unlimited and easy data storage.

The new Seawave is a professional product for sea professionals. The tried and tested, 12", multifunction chartplotter, revised with the new SD for data storage features a new, well-lit display, and maintains its sturdy, metal casing. Operates as radar and fish finder, too, when coupled with one of the SWR series radar scanners and Fishfinder Blackbox. MAX charts offer unmatched quality, readability and preciseness of data.

User friendly state-of-the-art software has been now updated with outstanding graphics and cutting edge functions such as "Grounding Alarm", "Route Checking", "Smooth Zoom" and many others.

# Seawave SD

**Plotter**  
**+ FishFinder (optional)**  
**+ Radar (optional)**  
**Bracket and Flush mountable**  
**Video input**  
**Video output**



SunLight Viewable



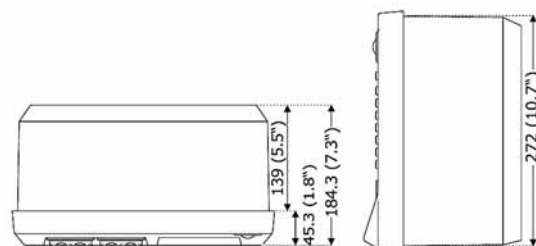
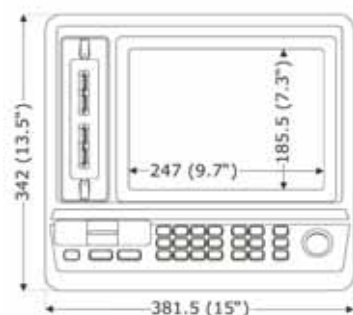
Waterproof



2  
Warranty Years



Designed by Jeppesen Marine



seiwa-marine.com



Maximum versatility and performance from your Seiwa plotters



Seiwa Today

#### SEIWA today

Seiwa's network of distributors covers all the most active markets worldwide, but more are under development as Seiwa is always positive and responding to new opportunities in other parts of the world.

All our distributors around the world offer both quality customer support and expert advice, and more importantly share with us in the same care and commitment to Seiwa customers, activities, and pride in our products.

Check on the web site [www.seiwa-marine.com](http://www.seiwa-marine.com) the list of all Seiwa distributors world wide. Or to learn about the technical specifications that make Seiwa products one of the most appreciated and used ranges in the world.

#### SEIWA and the future

Seiwa's main target is to be a trend setter in the field of technology and product quality with an uncompromising attitude toward customer satisfaction.

The future activities of Seiwa will be aimed towards expanding our worldmarket coverage not only with our present range of products, but also with new technology and applications, making navigation even more pleasurable and more fun!



[seiwa-marine.com](http://seiwa-marine.com)

## Fishfinder

- SW 701ce combo
- SW 701ci combo
- SW 501ce combo
- SW 501ci combo
- BBFF





Chartplotter  
Fishfinder

## SW 701 combo

**Plotter  
+ FishFinder  
+ Radar (optional)  
Bracket and Flush mountable  
Video input**



SunLight Viewable



Waterproof



Warranty Years



Designed by Jeppesen Marine

The most compact and powerful multifunction chartplotter/fishfinder with integrated dual frequency fishfinder 600 Wrms 50/200 kHz. It has now exceptionally enhanced its features and performance with the high precision revealed on high-definition 16-color daylight display. ADSP (Advanced Digital Signal Processing) and underwater sound propagation physical modeling improves signal sensitivity and noise discrimination providing faster and reliable bottom acquisition and tracking. Automatic noise reduction automatically adjusts operating parameter balancing optimal noise rejection with maximum signal sensitivity in order to improve target discrimination performances with dynamic cancellation of surface noise.

Completely waterproof, the SW 701 series can be flush mounted or bracket mounted, and come in two versions: built in GPS antenna, and External GPS antenna.

The SW 701 combo serie works with Xid Airmar transducers, directly connected on the connector on the rear panel of the combo. The SW 701 combo units can also be transformed into a radar when coupled with one of the SWR series radar scanners.

Jeppesen MAX charts offer unmatched quality, readability, and preciseness of data.

User friendly state-of-the-art software has been now updated with outstanding graphics and cutting edge functions such as "Grounding Alarm", "Route Checking", "Smooth Zoom", and many others.

Split the screen in 2, or 4  
window combination

Intuitive interface puts you  
in command

7" WVGA  
Sunlight Viewable display



seiwa-marine.com





Chartplotter · FishFinder

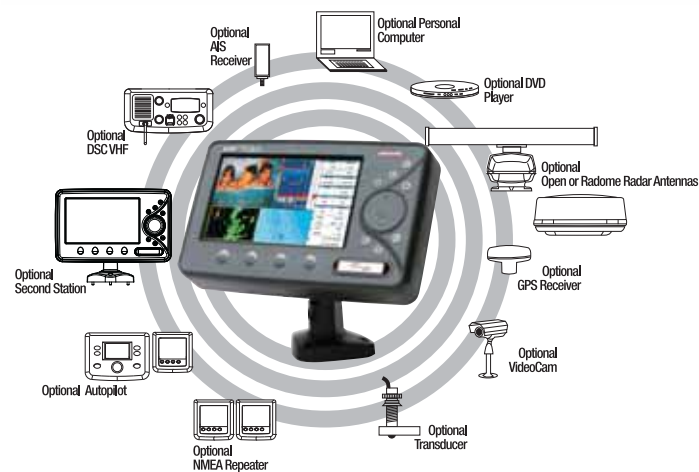
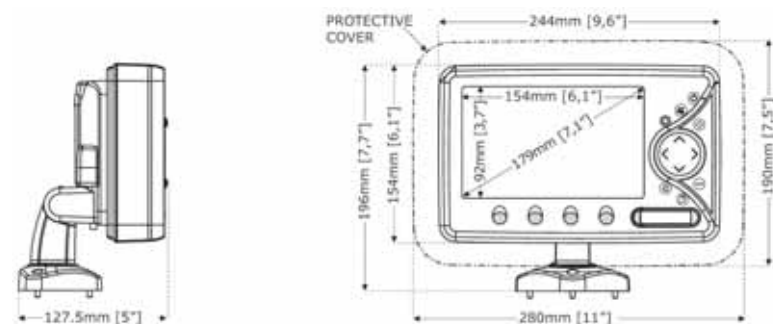
FishFinder

Chartplotter

Video · FishFinder · Radar · Chartplotter

Radar · Chartplotter

SW 701ci  
SW 701ce



POWERBOATS FROM 28' TO 40'



SAILBOATS FROM 30' TO 50'



## SW 501 combo

**Plotter  
+ FishFinder  
Bracket and Flush mountable**



SunLight Viewable



Waterproof



Warranty Years



Designed by Jeppesen Marine

A compact, innovative, well-lit, sunlight viewable chartplotter/fishfinder, featuring a unique sleek design and unsurpassed quality with integrated dual frequency fishfinder 600 Wrms 50/200 kHz. It has now exceptionally enhanced its features and performance with the high precision revealed on high-definition 16-color daylight display. ADSP (Advanced Digital Signal Processing) and underwater sound propagation physical modelling improves signal sensitivity and noise discrimination providing faster and reliable bottom acquisition and tracking. Automatic noise reduction automatically adjusts operating parameter balancing optimal noise rejection with maximum signal sensitivity in order to improve target discrimination performances with dynamic cancellation of surface noise. The SW 501 combo series feature can be flush mounted or bracket mounted. The new revolutionary quick disconnect adjustable bracket can be both tilted and rotated, matching all possible positioning and installation needs, and offering the easiest removal solution. The SW 501 combo series works with Xid Airmar transducers directly connected on the connector on the rear panel of the combo. Completely waterproof, the SW 500 combo series come in two versions: built in GPS antenna, and External GPS antenna. Jeppesen MAX charts offer unmatched quality, readability, and preciseness of data.

User friendly state-of-the-art software has been now updated with outstanding graphics and cutting edge functions such as "Grounding Alarm", "Route Checking", "Smooth Zoom", and many others.

Intuitive interface puts you  
in command

Multifunction

5" QVGA  
Sunlight Viewable display





Chartplotter/ FishFinder

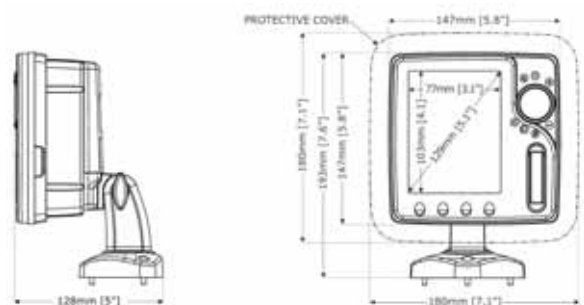
Chartplotter Cartography - Night palette

FishFinder - Dual Frequency

Chartplotter - Satellite Imagery

Chartplotter

SW 501ci  
SW 501ce



POWERBOATS UNDER 28'



SAILBOATS UNDER 30'



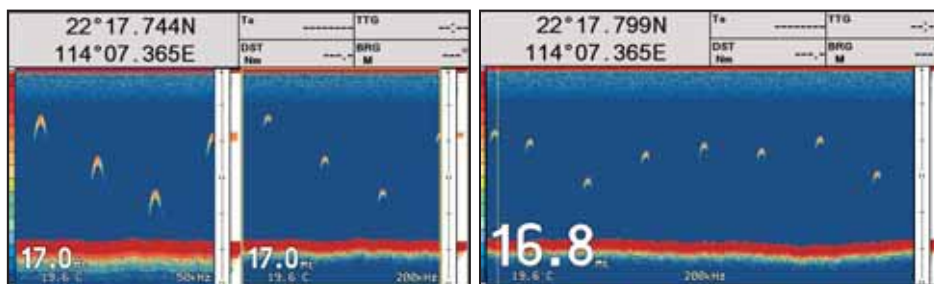
### New Black Box

The BBFF Black Box has been specially designed to be used with any of the multifunction chart plotter. The double fishing or cruising function and double 50/200 khz frequency 500/1000 W rms guarantee the best solution for use at all times. It has now exceptionally enhanced its features and performance with the high precision revealed on high-definition 16 color daylight display. ADSP (Advanced Digital Signal Processing) and underwater sound propagation physical modeling improves signal sensitivity and noise discrimination providing faster and reliable bottom acquisition and tracking.

Automatic noise reduction automatically adjusts operating parameter balancing optimal noise rejection with maximum signal sensitivity in order to improve target discrimination performances with dynamic cancellation of surface noise.

Can be coupled with various kinds of plastic stern thru hull transducers, or in hull transducers, or bronze thru hull transducers. The BBFF works with Airmar transducers

## BB FF 50/200 MK-II

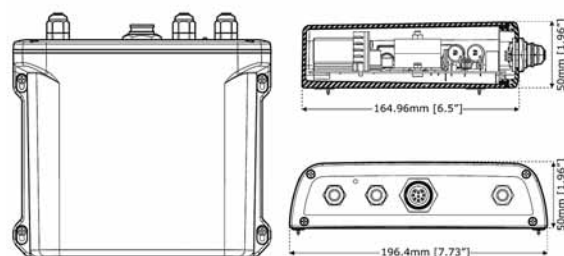


echosounder dual frequency

echosounder single frequency



OPTIONAL TRANSDUCER



Splashproof



Warranty Years



## Accessories

- Autopilot Series
- Data Repeater
- Radar Scanners
- GPS Antenna
- Satellite TV Antenna

Having sophisticated navigation systems at your disposal without being able to count on a self-governing instrument means not giving substance to your on-board electronics installation. Both for powerful motor yachts and slender sailing boats, complex work crafts and fast daily-cruisers, autopilots are the most used - and welcomed - instrument used during navigation. Seiwa offers a range of Autopilots which guarantees the best solution for each type of boat.

Data repeater, Speed and Depth digital repeater  
Large, 4 digit LCD display,  
5 levels of backlight with external  
backlight control  
2 years of warranty  
Working with any Seiwa  
Chartplotter



## SW AP Autopilot series

## Data Repeater

SW AP01 - Autopilot  
SW AP03 - Autopilot



SW RP03 - NMEA Data Repeater  
SW RP05 - Depth  
SW RP07 - Speed

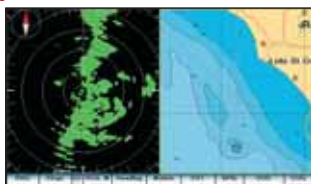




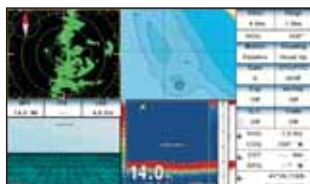


The difference between an integrated, on-board system and a simple, stand alone instrument is that the former makes it possible to connect up to the main on-board peripheral devices and increase their functions. Seiwa offers a 4 model range of radars, from the compact Radome 2 Kw 24Nm ideal for RIBs and sailboats, to the Open 4kw 48 Nm model, ideal for pleasure boating and professional motor yachts. Open array models are used when maximum target resolution is necessary. Featuring greater capacity and lower horizontal angles, they are able to separate and make out very close targets. Compatible with all the chart plotters and combo units, excluding the SW 500/501 series.

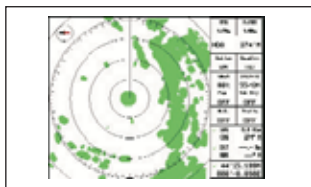
## SWR series Radar Scanners



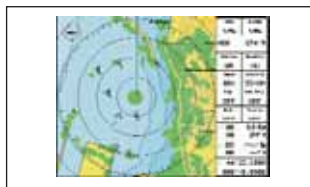
cartography and radar split screen



radar, chart, 3D road and echosounder



radar full page



radar overlay



Waterproof



Warranty Years

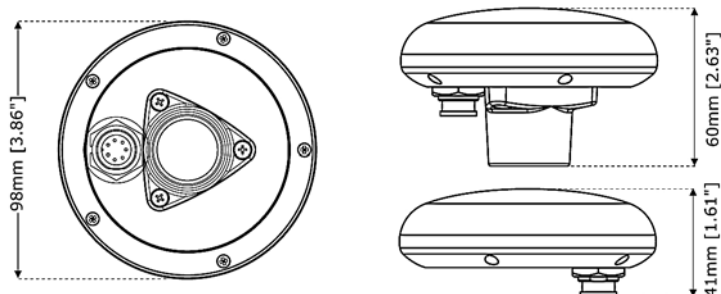
**Radar Scanners:**  
 SWR 1  
 SWR 8  
 SWR 9  
 SWR 10 - 3,5'



seiwa-marine.com

Smart and compact DGPS WAAS/EGNOS MSAS, satellite differential receiver antenna  
16 channels, accuracy better than three meters (by decoding GPS correction signal)  
Standard thread 1"x14 or flush mount  
IP67  
working with any Seiwa Chartplotter

## GPS Antenna





The new full range of satellite Seiwa TV SAT antennas guarantees high performance and high quality to onboard entertainment. They are extremely compact, and light in order to be installed also on small and medium vessels. The high tracking speed is obtained with a mathematic algorithm combined with an extremely precise signal tracking, providing uninterrupted satellite television reception even in very rough sea condition. Finally, for the first time a satellite antenna comes with a user friendly and semi automatic programming mode.

## Satellite TV antenna

### SW SAT SATELLITE TV ANTENNAS

SW SAT 71S  
SW SAT 61  
SW SAT 55  
SW SAT 41S  
SW SAT 41  
SW SAT 39S  
SW SAT 39/3  
SW SAT 39



Waterproof



Warranty Years



[seiwa-marine.com](http://seiwa-marine.com)



RT-MOB is a Real Time Man Overboard System that consists of a base station and wireless tags worn by crew members, family or pets. RT-MOB can be used as a stand alone system or integrated with GPS Tracking Service and RT-SAT, all integrated into a Seiwa network.

RT-MOB (Real Time – Man Over Board) is a radio-frequency high-tech product able to signal to the crew, in real time, a man over board alarm.

3 security level



## Safety System RT-MOB

### 1 - Sensors able to detect sodium ions

The alarm sounds and lights as soon as the tag sensors get into contact with the salt water, they send out a man over board alarm with the consequent activation of the siren on board.

### 2 - Out of range

The automatic search mode detects the presence of the transmission signal every 3 seconds. After 3 failed attempts, the alarm of the boat will be activated .

### 3 - Panic Alarm

The tag has a button to press in case of danger to activate the alarm.

RT-MOB INCLUDES GPS tracking device.

It's able to fix the real geographical point where the Alarm is activated. It can be connected to chartplotters.

#### Technical Specifications:

Power Supply:	12 Vdc - 220 Vac
Man over board Alarm light and acoustic signal:	yes
Low battery signal:	yes
Signal for out of range RT-MOB:	yes
RT-MOB Signal Panic Alert	
Auxiliary exits:	2 contacts – 5 A n.o.
Power supply tag:	2 batteries AAA 1,5 volts
LED for status feedback:	yes
"Panic alert " S.O.S. button:	yes
Up to max. 16 tags for each central station	
IMQ certified according to :	EN 300 220-3 EN 301489-3 EN 60950- 1 EN 60329 EN 60 032-2



RT-SAT is capable to send the alarm activated by RT-MOB, it transmits the position of the boat when the alarm is activated to **the satellite control center**, through LEOSAR system, with a minimal set of information about the subscriber and the boat. This information will allow the operator to contact the ship immediately.

If the emergency is confirmed or with no reply, the control center operator will send an emergency signal to the coast guard with the coordinates of the boat. The Coast Guard will then attempt to contact the boat by VHF and will arrange a rescue operation if required.

**A manual reset button** allows to disable the alert message.

The **Satellite control center service** is provided 24/7 in several European languages: Italian, Spanish, French and German (from the Milan headquarters) Czech, Slovak, Polish and Russian (from the Prague headquarters) Hungarian (from the Budapest headquarters) and English.

#### **Automatic Locating service:**

automatic location messages is sent by the RT-SAT (two per day with a standard configuration)

#### **Post-Theft service:**

localization of the boat whether a theft occurs (customer activated by calling the Satellite control center 24 /7) "Boat Alarm" is a push button installed on the ship.

It's a further service connected on RT-SAT.

In a general emergency ( piracy, medical problems...) the crew will be able to send a boat alert to the sat control center that will receive an alarm code different from RT-MOB's.

The operator will contact the ship immediately and if the ship confirms the real emergency, the control center operator will send a generic emergency signal to the coast guard with the coordinates of the boat.

## Safety System RT-MOB





Maximum versatility and performance from your Seiwa plotters



Technical  
Specifications







# Technical Specifications





MARLIN



SW 1101



SW 701i - SW 701e



SW 701ci - SW 701ce



SW 501i - SW 501e



SW 501ci - SW 501ce



EXPLORER CUBE



SEAWAVE

DISPLAY TYPE	TFT transmissive LCD (active area 15")	Sun Light Viewable Color LCD (active area 10,4")	Sun Light Viewable Color LCD (active area 7"wide)	Sun Light Viewable Color LCD (active area 7" wide)	Sun Light Viewable Color LCD (active area 5")	Sun Light Viewable Color LCD (active area 5")	N	TFT trasmissive LCD (active area 12,1")
SCREEN SIZE w x h (mm & Inch)	W 307 [12,10"] H 230,7 [9,10"]	W 211,2 [8,3"] H 158,4 [6,2"]	W 152,4 [6"] H 91,4 [3,6"]	W 152,4 [6"] H 91,4 [3,6"]	W 77 (3,1") H 103,5 [4,1"]	W 77 (3,1") H 103,5 [4,1"]	N	W 247 [9,7"] H 185,5 [7,3"]
RESOLUTION	1024 x 768 pixels	800 x 600 pixels	800x480 pixels	800 x 480 pixels	240x320 pixels	240 x 320 pixels	640 x 480 or 800 x 600 or 1024 x 768 pixels user selectable	800 x 600 pixels
DIMENSIONS (mm & Inch)	L 345,4 (13,6") W 378 (14,86") H 99 (3,9")	L 224 (8,8") W 332,5 (13,1") H 128 [5"]	L 154 (6,1") W 244 (9,6") H 89,0 [3,5"]	L 154 (6,1") W 244 (9,6") H 89,0 [3,5"]	L 147,7 [5,8"] W 147,7 [5,8"] H 114,7 [4,5"]	L 147,7 [5,8"] W 147,7 [5,8"] H 135 (5,5")	L 95 (3,7") W 140 (5,5") H 84,4 [3,3"]	L 342 [13,5"] W 381,5 [15"] H 221 [8,9"]
CARTOGRAPHY	C-MAP C-CARD	C-MAP SD-CARD	C-MAP SD-CARD	C-MAP SD-CARD	C-MAP SD-CARD	C-MAP SD-CARD	C-MAP C-CARD	C-MAP C-CARD
OPERATING VOLTAGE	10 - 35 V dc.	10 - 35 V dc.	10 - 35 V dc.	10 - 35 V dc.	10 - 35 V dc.	10 - 35 V dc.	10 - 35 V dc.	10 - 35 V dc.
INTERFACE INPUTS/OUTPUTS	5 I/O Ports (NMEA0183)	5 I/O Ports (NMEA0183)	5 I/O Ports (NMEA0183)	4 I/O Ports (NMEA0183)	3 I/O Ports (NMEA0183)	2 I/O Ports (NMEA0183)	5 I/O Ports (NMEA0183)	5 I/O Ports (NMEA0183)
BBFF	Y	Y	Y	BUILT-IN	Y	BUILT-IN	Y	Y
RADAR	Y	Y	Y	Y	N	N	Y	Y
AIS	AIS 38400	AIS 38400	AIS 38400	AIS 38400	AIS 38400	AIS 38400	AIS 38400	AIS 38400
VIDEO INPUT	2	2	1	1	N	N	N	2
MICROPROCESSOR	400Mhz	300Mhz	300Mhz	300Mhz	300Mhz	300Mhz	400Mhz	200Mhz
C-CARD SLOTS	2	1					2	4
USER POINTS	10000	10000	10000	10000	5000	5000	10000	10000
SD SLOTS			1	1	1	1		1
TYPE OF USER POINTS	16 Types & 8 Colors	16 Types & 1 Colors	16 Types & 8 Colors	16 Types & 8 Colors	16 Types & 8 Colors	16 Types & 8 Colors	16 Types & 8 Colors	16 Types & 8 Colors
ROUTES	10000	50	50	50	25	25	10000	10000
MAX USER POINTS PER ROUTE	10000	400	400	400	200	200	10000	10000
TRACKS	10000	5	5	5	5	5	10000	10000
TRACKPOINTS	10000	10000	10000	10000	5000	5000	10000	10000
FEATURES	MOB Grounding Alarm Arrival Alarm Depth Alarm XTE Alarm Anchor Alarm User Points List page Port & Tide Info Automatic Info On Cartographic Objects Navigation Info Find Port Find Wrecks Find Obstructions Find Tide Station 3D Road Page Time to Destination Distance to Destination Fuel Consumption Compass Calibration Wind Functions	MOB Grounding Alarm Arrival Alarm Depth Alarm XTE Alarm Anchor Alarm User Points List page Port & Tide Info Automatic Info On Cartographic Objects Navigation Info Find Port Find Wrecks Find Obstructions Find Tide Station 3D Road Page Time to Destination Distance to Destination Fuel Consumption Compass Calibration Wind Functions	MOB Grounding Alarm Arrival Alarm Depth Alarm XTE Alarm Anchor Alarm User Points List page Port & Tide Info Automatic Info On Cartographic Objects Navigation Info Find Port Find Wrecks Find Obstructions Find Tide Station 3D Road Page Time to Destination Distance to Destination Fuel Consumption Compass Calibration Wind Functions	MOB Grounding Alarm Arrival Alarm Depth Alarm XTE Alarm Anchor Alarm User Points List page Port & Tide Info Automatic Info On Cartographic Objects Navigation Info Find Port Find Wrecks Find Obstructions Find Tide Station 3D Road Page Time to Destination Distance to Destination Fuel Consumption Compass Calibration Wind Functions	MOB Grounding Alarm Arrival Alarm Depth Alarm XTE Alarm Anchor Alarm User Points List page Port & Tide Info Automatic Info On Cartographic Objects Navigation Info Find Port Find Wrecks Find Obstructions Find Tide Station 3D Road Page Time to Destination Distance to Destination Fuel Consumption Compass Calibration	MOB Grounding Alarm Arrival Alarm Depth Alarm XTE Alarm Anchor Alarm User Points List page Port & Tide Info Automatic Info On Cartographic Objects Navigation Info Find Port Find Wrecks Find Obstructions Find Tide Station 3D Road Page Time to Destination Distance to Destination Fuel Consumption Compass Calibration	MOB Grounding Alarm Arrival Alarm Depth Alarm XTE Alarm Anchor Alarm User Points List page Port & Tide Info Automatic Info On Cartographic Objects Navigation Info Find Port Find Wrecks Find Obstructions Find Tide Station 3D Road Page Time to Destination Distance to Destination Fuel Consumption Compass Calibration Wind Functions	MOB Grounding Alarm Arrival Alarm Depth Alarm XTE Alarm Anchor Alarm User Points List page Port & Tide Info Automatic Info On Cartographic Objects Navigation Info Find Port Find Wrecks Find Obstructions Find Tide Station 3D Road Page Time to Destination Distance to Destination Fuel Consumption Compass Calibration



SWR 10 (3.5')



SWR 9



SWR 8



SWR 1

ANTENNA	3.5 Feet	1.8 Feet	1.5 Feet	0.9 Feet
TRANSMITTING POWER	4Kw	4Kw	2Kw	2Kw
TRANSMITTING FREQUENCY	9410 ±30Mhz	9410 ±30Mhz	9445 ±30Mhz	9445 ±30Mhz
BEAM WIDTH (DEGREE)	2.4° Horizontal , 25° Vertical	4.0° Horizontal , 25° Vertical	4.7° Horizontal , 25° Vertical	7.0° Horizontal , 25° Vertical
ROTATION	24rpm	24rpm	30rpm	30rpm
OPERATING TEMPERATURE	-25 to +55 °C	-25 to +55 °C	-25 to +55 °C	-25 to +55 °C
APPARENT WIND FUNCTIONING	70Knots	100Knots	100Knots	100Knots
WATER RESISTANCE	IPx6(IEC60529)	IPx6(IEC60529)	IPx6(IEC60529)	IPx6(IEC60529)
SCALE (NM)	1/8 ~48	1/8 ~36	1/8 ~24	1/8 ~24
IMAGE PRESENTATION	Full 240x240/480x480 dots(2Bits) Quadrant: 120x120/240 x240 dots(2 Bits)	Full 240x240/480x480 dots(2Bits) Quadrant: 120x120/240 x240 dots(2 Bits)	Full 240x240/480x480 dots(2Bits) Quadrant: 120x120/240 x240 dots(2 Bits)	Full 240x240/480x480 dots(2Bits) Quadrant: 120x120/240 x240 dots(2 Bits)
WIRE LENGHT	10M (optional additional cable available)	10M (optional additional cable available)	10M (optional additional cable available)	10M (optional additional cable available)
SUPPLY VOLTAGE	12.8 to 41.6 VDC	12.8 to 41.6 VDC	12.8 to 41.6 VDC	12.8 to 31.2VDC
POWER CONSUMPTION MAX	80W or Less	45W or Less	30W or Less	30W or Less



BBFF MK-II - Black Box Fishfinder

DISPLAY COLOURS:	16 colours on colour chart plotter
DISPLAY RESOLUTION VERTICAL:	up to 400 pixels (depending on chart plotter screen resolution)
ELECTRIC POWER SUPPLY:	10-35 Vdc
MAXIMUM POWER CONSUMPTION:	17W max (1A @12V)
POWER CONSUMPTION on stand-by:	1.7 W max
OPERATING FREQUENCY:	50/200 kHz
ACOUSTIC SOUNDER POWER:	600/1000W (4800/8000 Wpp)
EXTERNAL AUDIBLE SIGNAL (buzzer):	12Vdc, 400ma
OPERATING TEMPERATURE:	0°C to + 50°C
WEIGHT:	1Kg
DIMENSIONS:	193mm x 55mm
LEVEL OF PROTECTION:	IP 54

Satellite TV Antenna

SW SAT 39  
SW SAT 39/3  
SW SAT 39S

SW SAT 41



SW SAT 41S



SW SAT 55



SW SAT 61



SW SAT 71S

ANTENNA DISH DIAMETER:	41 cm	41 cm	41 cm	55 cm	61 cm	71 cm
OVERALL DIMENSIONS (Ø X HEIGHT):	45 x 52 cm	45 x 52 cm	45 x 52 cm	59 x 73 cm	65 x 77 cm	81 x 91 cm
WEIGHT:	10 Kg	10 Kg	10 Kg	22 Kg	24 Kg	25 Kg
AZIMUT RANGE:	720°	720°	720°	720°	720°	720°
ELEVATION RANGE:	7° - 85°	7° - 85°	7° - 85°	7° - 90°	0° - 90°	5° - 90°
LNB ROTATION:	-45°/+45° for TechSat 39S	-45°/+45°	-45°/+45°	-45°/+45°	-60°/+60°	-45°/+45°
ROLL AND PITCH TRACKING:	60°/s	60°/s	60°/s	60°/s	45°/s	50°/s
OPERATING TEMPERATURE RANGE:	-20°C/+50°C	-20°C/+50°C	-20°C/+50°C	-20°C/+50°C	-20°C/+50°C	-20°C/+55°C
STORED SATELLITES:	2	2	2	12 + 12	20	12 + 12
SKEW REGULATION :	manual and automatic	manual and automatic	manual and automatic	manual and automatic	manual and automatic	manual and automatic
GAIN:	31.5 dB	31.5 dB	31.5 dB	31.5 dB	47 dB	36 dB
POWER CONSUMPTION:	20W max	20W max	20W max	40W max	50W max	45W max
ELECTRIC POWER SUPPLY:	12/24 Vdc	12/24 Vdc	12/24 Vdc	12/28 Vdc	24 Vdc	12/28 Vdc
OUTPUT	2 independent output LNB for TechSat 39 (stabilized on 2 axis) 3 independent output LNB for TechSat 39/3 (stabilized on 2 axis) 3 independent output LNB for TechSat 39S (stabilized on 3 axis)					
	LNB 3 universal outputs	LNB 4 universal expandable outputs	LNB 4 universal outputs	LNB 4 universal outputs	LNB VH VH	LNB 4 universal outputs
	Double Polarization System: DVB (Europe) and DVS (America)					





SW AP03 autopilot



SW AP01 AUTOPILOT



NMEA Data SW RP03



DEPTH SW RP05

SW RP07  
Log/Speed/temperature

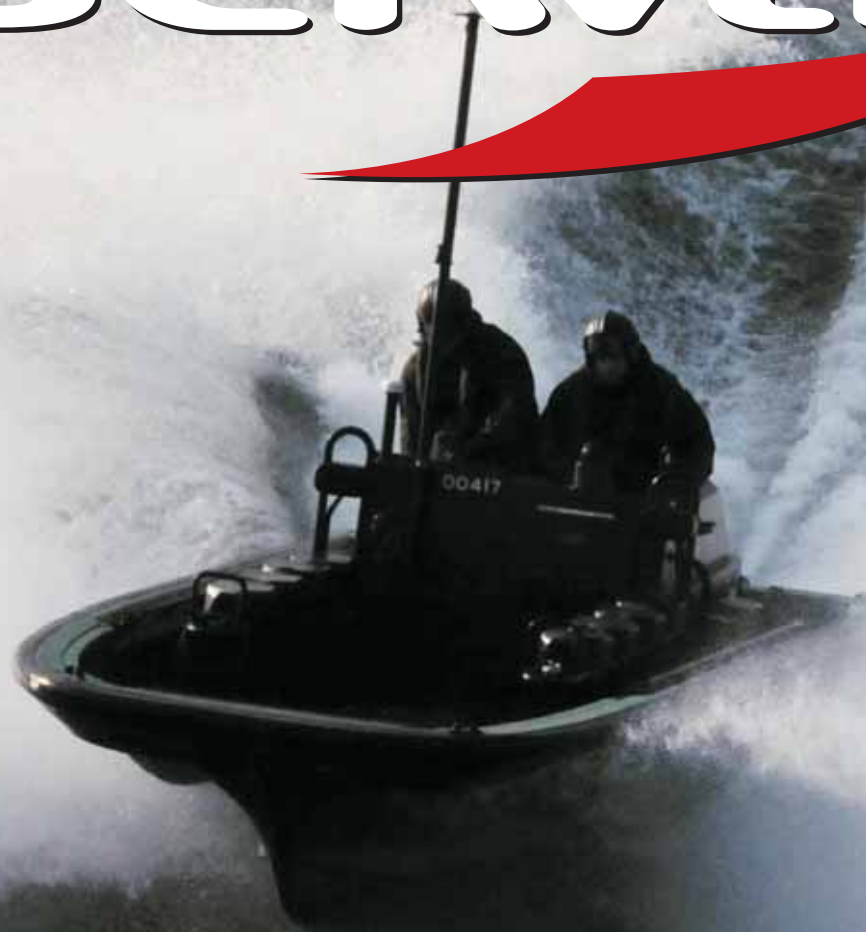
GPS ANTENNA

<b>DISPLAY:</b>	backlight LCD with 6 m cable	backlight LCD with 6 m cable	Large, 4 digit LCD display, 5 levels of backlight with external backlight control	Large, 4 digit LCD display, 5 levels of backlight with external backlight control	Large, 4 digit LCD display, 5 levels of backlight with external backlight control
<b>INPUT FORMAT:</b>	NMEA 0183	NMEA 0183	NMEA 0183, standard and proprietary sentences		
<b>INPUT CHANNELS:</b>	2	2	4		
<b>OUTPUT:</b>	1	1		1 NMEA 0183	
<b>ELECTRIC POWER SUPPLY:</b>	12 to 14Vdc*	12 to 14Vdc	9.50 to 33Vdc, .035 A nominal	9.50 to 16.00Vdc, .037 A nominal	9.50 to 33.00Vdc, .037 A nominal
<b>OPERATING TEMPERATURE:</b>	-10° to 50°C	-10° to 50°C	0° to 50°C	0° to 50°C	0° to 50°C
<b>ELECTRIC POWER SUPPLY RANGE:</b>	: 10 to 16 Vdc	10 to 16 Vdc			
<b>DATA INPUT, VOLTAGE RANGE:</b>			0 to 5 V Nominal, -20V to +20V maximum		
<b>INTERFACES:</b>	NMEA 0183 · 2 INPUT · 1 OUTPUT	NMEA 0183 · 2 INPUT · 1 OUTPUT			
<b>CONSUMPTION:</b>	Standby 0.3 A @ 12 Vdc during pilotage with 20% duty cycle: 2.5A	Standby 0.3 A @ 12 Vdc during pilotage with 20% duty cycle: 2.5A			
<b>COMPASS:</b>	Fluxgate, 8 mt cable	Fluxgate, 8 mt cable			
<b>ACCURACY:</b>	2°RMS	2°RMS			
<b>ROLL/PITCH</b>	± 35°	± 35°			
<b>RUDDER TRANSDUCER:</b>	10 mt. cable	10 mt. cable			
<b>MOTOR DRIVE:</b>	15A continuous, 30A peak	15 A continuous, 30 A peak			
<b>ACCESSORIES INCLUDED:</b>	helm transducer, controller, fluxgate compass, junction and control box	helm transducer, controller, fluxgate compass, junction and control box			
<b>HELM POSITION ACCURACY:</b>		1°			
<b>MEMORY:</b>			Up to 10 new sentences (can be overwritten)		
<b>RESOLUTION:</b>				0.1 metre to 20.0 - 1 over 20	from 0.1 knots, MPH, Km/h, 0.1 °F, °C
<b>KEEL OFFSET OF RANGE REGULATION:</b>				-6 to +6 m	
<b>ALARMS (On/Off icon):</b>				Shallow water alarm Deep water alarm · Anchor alarm	
<b>ADDITIONAL FEATURES:</b>				Units of measurement in Feet, Metres and Fathoms	Units of measurement in Knots, MPH, Km/h, °F, °C
<b>TRANSDUCERS:</b>				stern and thru-hull plastic transducer, thru-hull bronze transducer	stern and thru hull in plastic for speed/temperature, thru hull in bronze for speed/temperature
<b>DATA DISPLAYED:</b>					Speed, Average Speed, Water Temperature, Regatta Chronometer, Elapsed Time
<b>RANGE:</b>				Depth from 0.3 to 365 metres	Speed from 0.00 to 50.0 knots Temperature from 0.0°V to 32.0° Regatta chronometer from 1 to 99 minutes

\* 24 Vdc optional upon request

<b>OVERALL DIMENSIONS (ø x height):</b>	97 x 32 mm (flush/pole/rail mounting)
<b>WEIGHT:</b>	160 grams (without cable)
<b>CABLE:</b>	15 meter 8x28AWG
<b>INPUT VOLTAGE:</b>	10-35 Vdc.
<b>POWER CONSUMPTION:</b>	0.8 W max
<b>ELECTRICAL INTERFACE :</b>	TTL voltage levels, RS-232 polarity
<b>RECEIVING METHOD :</b>	16 channels parallel (up to 3 for WAAS Satellites)
<b>RECEIVING FREQUENCY :</b>	1575.42MHz (L1, C/A code)
<b>RECEIVING SENSITIVITY :</b>	Less than -134 dBm
<b>TIME TO FIRST FIX (TTFF)</b>	Warm Start :33 seconds (typical) Cold Start :40 seconds (typical)
<b>ACCURACY POSITION :</b>	Less than 2.5mCEP1 5.0mSEP2: GPS:(SA=OFF; HDOP<4) Less than 2.0mCEP1 3.0mSEP2: DGPS:(SA=OFF; HDOP<4)
<b>DYNAMICS ACCELERATION:</b>	Strong Signals <= 4g Weak Signals typical 1g
<b>ALTITUDE:</b>	18000m
<b>VELOCITY:</b>	1850Km/h (515 m/sec)
<b>DGPS FORMAT:</b>	WAAS; EGNOS; MSAS
<b>OUTPUT FORMAT:</b>	NMEA-0183 Baud rate 4800 N81
<b>NMEA OUTPUT MESSAGES:</b>	GGA, RMC, GSA, GSV, TXT
<b>GEODETIC DATUM :</b>	WGS84
<b>OPERATING TEMPERATURE:</b>	from 0°C to +60°C
<b>STORAGE TEMPERATURE:</b>	from -20°C to +85°C
<b>RELATIVE HUMIDITY:</b>	95% non-condensing
<b>WATER RESISTANCE:</b>	IPX7

**SEIWA**



[www.seiwa-marine.com](http://www.seiwa-marine.com)

All the info related to all Seiwa products can be easily found on our web site [www.seiwa-marine.com](http://www.seiwa-marine.com).

Manuals, technical specifications, news, information, list distributors, and much more, available on line at all times.

Check [www.seiwa-marine.com](http://www.seiwa-marine.com) for the solutions to your navigational needs.



The screenshot shows the Seiwa website homepage. At the top is the Seiwa logo with the tagline "NAVIGATING THE SEAS OF TOMORROW!". Below the logo is a navigation menu with links: ABOUT US, MARINE ELECTRONICS, LED LIGHTS, SUPPORT, EVENTS, SEIWADIRECT.COM, and CONTACT US. The main banner features a speedboat on the left and a large marine electronic display on the right showing a map and various data. The text "Tradition in Innovation." is overlaid on the banner. Below the banner are four columns of product categories: MARINE ELECTRONICS (showing a display), LED LIGHTS (showing a light fixture), TECHNICAL SUPPORT (showing a wiring diagram), and ABOUT SEIWA (showing the Seiwa logo on a flag). At the bottom is a footer with links: | About Us | Terms of Use | Privacy Policy | Contact Us | Sitemap |.







SAVING THE SEAS OF TOMORROW

PRODUCTS | SUPPORT | DOWNLOAD | DEALER LOCATOR | SEIWA DIRECT.COM | CONTACT US

SEIWA MARINE ELECTRONIC PRODUCTS



Tradition in Innovation.

MULTIFUNCTION UNITS	COMBO UNITS	RADAR SCANNERS	ACCESSORIES
 <p><b>SW501i</b> 5 inches screen, internal GPS</p>	 <p><b>SW501d</b> 5 inches screen, internal GPS, 50/200, 600W</p>	 <p><b>SWR1 Radome</b> 24x, 240m</p>	 <p><b>BBFF</b> 50/200KHz, 100W</p>
 <p><b>SW501e</b> 5 inches screen, external GPS</p>	 <p><b>SW501ce</b> 5 inches screen, external GPS, 50/200, 600W</p>	 <p><b>SWR8 Radome</b> 24x, 240m</p>	 <p><b>GPS antenna</b> WAAS, 50KHz, 100W, waterproof satellite differential antenna</p>
 <p><b>SW701i</b> 7 inches wide screen, internal GPS</p>	 <p><b>SW701d</b> 7 inches wide screen, internal GPS, 50/200, 600W</p>	 <p><b>SWR9 Radome</b> 40x, 400m</p>	 <p><b>RT-MOB</b> Radio safety tool</p>
 <p><b>SW701e</b> 7 inches wide screen, external GPS</p>	 <p><b>SW701ce</b> 7 inches wide screen, external GPS, 50/200, 600W</p>	 <p><b>SWR10 Open</b> 40x, 400m</p>	
 <p><b>SW1101</b> 11 inches screen, external GPS</p>			
 <p><b>Explorer3</b> 1024x768 resolution, external GPS</p>			
 <p><b>Marlin</b> 13 inches screen, external GPS</p>			
 <p><b>Seawave</b> 13 inches screen, external GPS</p>			

[About Us](#) | [Terms of Use](#) | [Privacy Policy](#) | [Contact Us](#) | [Sitemap](#)

[www.seiwa-marine.com](http://www.seiwa-marine.com)

[seiwa-marine.com](http://seiwa-marine.com)  
[seiwamarine.eu](http://seiwamarine.eu)



[www.seiwa-marine.com](http://www.seiwa-marine.com)



**Seiwa Co Ltd**

916 Po Lung Centre  
11 Wang Chiu Rd  
Kowloon Bay  
Hong Kong  
[info@seiwa-marine.com](mailto:info@seiwa-marine.com)



**Seiwa S.R.L.**

Via Crispi, 6  
20052 Monza (MB)  
Italy  
Phone +39 039 91 51 273  
Fax +39 039 91 51 274

Distributed by

2011

NAVIGATING THE SEAS OF TOMORROW